

# QGIS Application - Bug report #17939

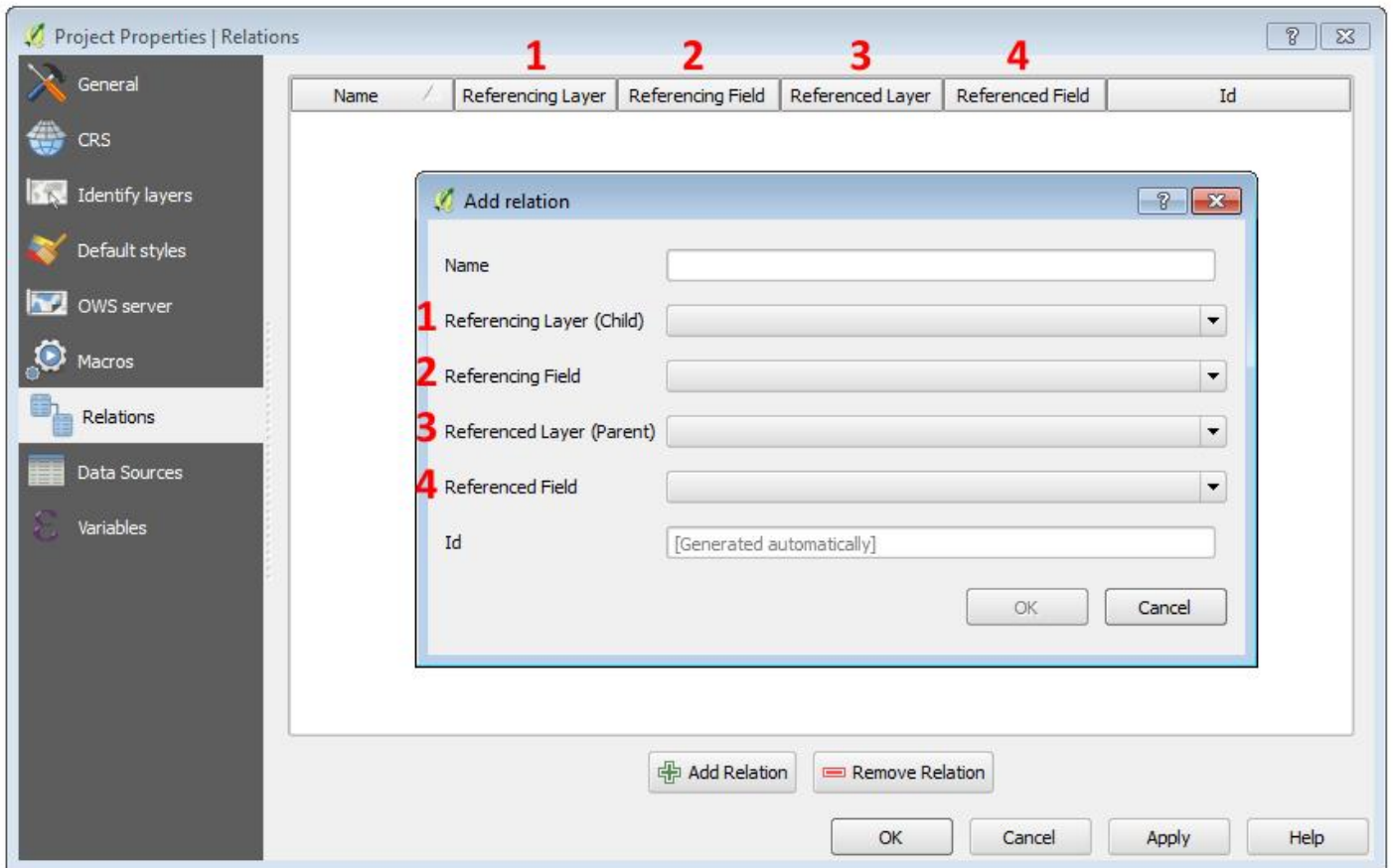
## Parent/Child column pairs reversed from entry dialog to overview table

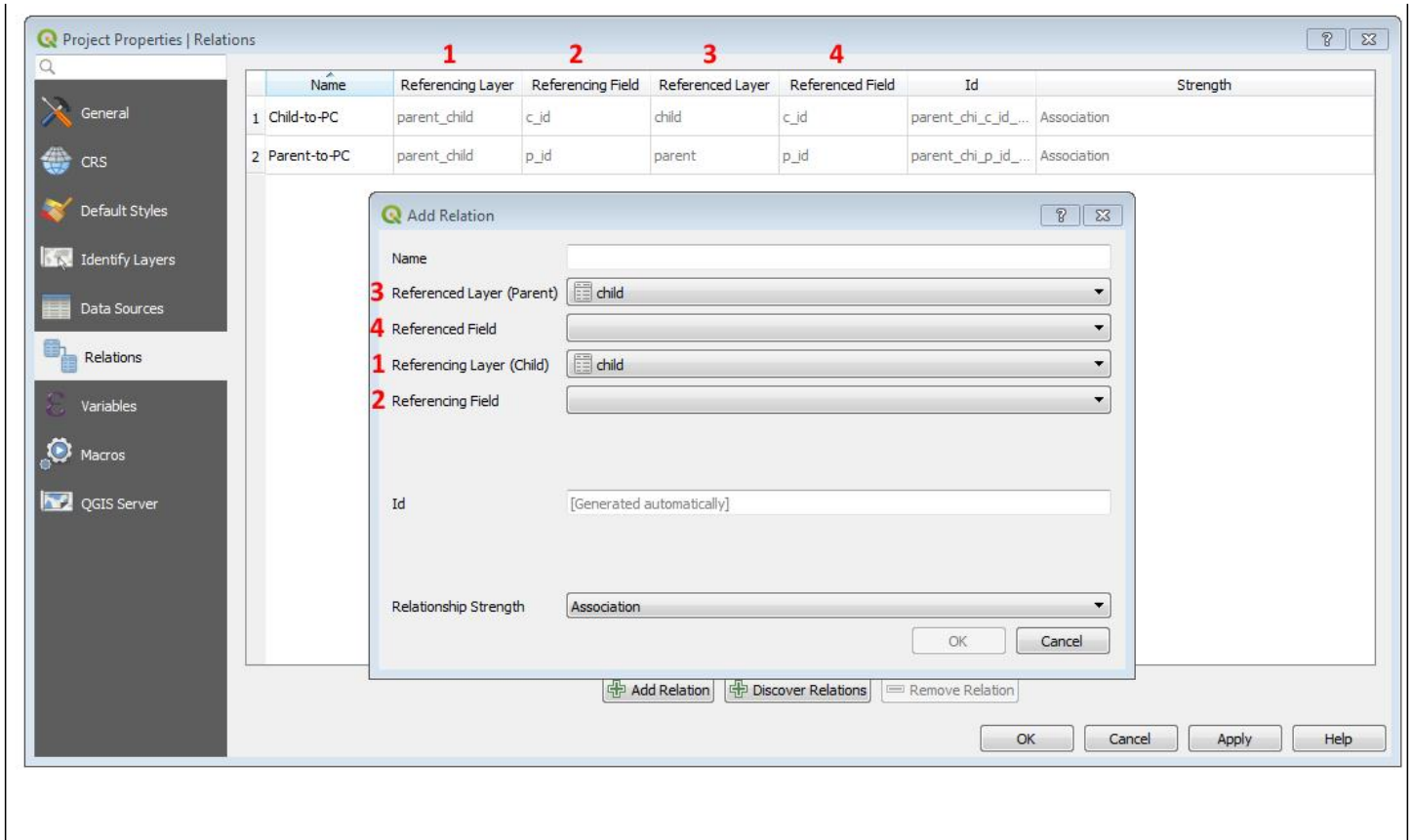
2018-01-24 01:48 AM - Nathan Saylor

<b>Status:</b> Closed	
<b>Priority:</b> Normal	
<b>Assignee:</b>	
<b>Category:</b> GUI	
<b>Affected QGIS version:</b> master	<b>Regression?:</b> Yes
<b>Operating System:</b>	<b>Easy fix?:</b> No
<b>Pull Request or Patch supplied:</b> No	<b>Resolution:</b> fixed/implemented
<b>Crashes QGIS or corrupts data:</b> No	<b>Copied to github as #:</b> 25835

### Description

Parent/Child column pairs reversed from entry dialog to overview table. In QGIS 2.16, the sequences of the two matched. In 2.99 they're switched. I'm not into this enough to have an opinion on which should come first, but I think consistency between the dialog and overview would be desirable.





## Associated revisions

**Revision 237455a7 - 2018-01-24 11:52 PM - Nyal Dawson**

Use same relation parent/child order in list as in new relation dialog

Fixes #17939

## History

**#1 - 2018-01-24 09:58 AM - Nyal Dawson**

- Status changed from Open to In Progress

PR <https://github.com/qgis/QGIS/pull/6157>

**#2 - 2018-01-24 11:52 PM - Nyal Dawson**

- % Done changed from 0 to 100

- Status changed from In Progress to Closed

Applied in changeset commit:qgis|237455a78f99d4240e7a54d0a718b14c1ae65151.

**#3 - 2018-02-21 09:46 PM - Giovanni Manghi**

- Resolution set to fixed/implemented

## Files

QRelations2\_16.jpg

56.7 KB

2018-01-24

Nathan Saylor

