

# QGIS Application - Bug report #17191

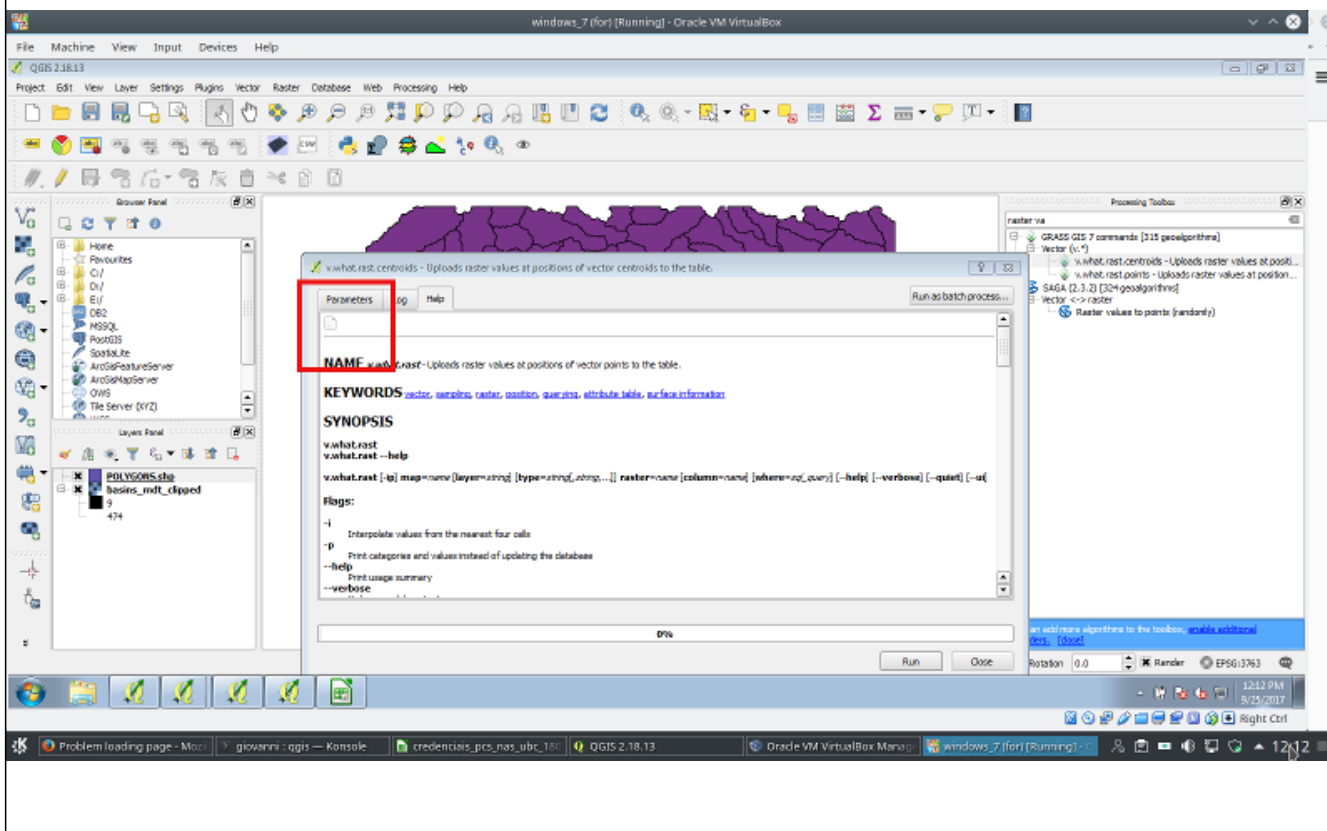
## Images do not show anymore in GRASS docs in Processing

2017-09-25 01:14 PM - Giovanni Manghi

<b>Status:</b> Closed	<b>Regression?:</b> Yes
<b>Priority:</b> High	<b>Easy fix?:</b> No
<b>Assignee:</b> Victor Olaya	<b>Resolution:</b> fixed/implemented
<b>Category:</b> Processing/GRASS	<b>Copied to github as #:</b> 25090
<b>Affected QGIS version:</b> 2.18.13	
<b>Operating System:</b> Windows	
<b>Pull Request or Patch supplied:</b> No	
<b>Crashes QGIS or corrupts data:</b> No	

### Description

They used to show just fine.



### Associated revisions

Revision 03a444ca - 2017-09-27 03:22 PM - Alexander Bruy

[processing] improve loading help from local files (refs #17191)

### History

#1 - 2017-09-27 03:25 PM - Alexander Bruy

Fixed for local files. Not sure if we can fix it for remote files, e.g. online docs, as we use QTextBrowser for help and download HTML before showing it.

#2 - 2017-09-27 03:25 PM - Alexander Bruy

- Status changed from Open to Feedback

**#3 - 2017-09-27 04:05 PM - Giovanni Manghi**

- Resolution set to fixed/implemented

- Status changed from Feedback to Closed

Seems good to me! thanks!

**Files**

---

Screenshot_20170925_121228.png	120 KB	2017-09-25	Giovanni Manghi
--------------------------------	--------	------------	-----------------