

QGIS Application - Bug report #15658

map tips does not show images correctly anymore... on Linux

2016-10-04 01:08 AM - Adam Szieberth

<b>Status:</b>	Closed		
<b>Priority:</b>	High		
<b>Assignee:</b>			
<b>Category:</b>	Map Tools		
<b>Affected QGIS version:</b>	2.18.11	<b>Regression?:</b>	Yes
<b>Operating System:</b>	Ubuntu 16.04 (possibly others)	<b>Easy fix?:</b>	No
<b>Pull Request or Patch supplied:</b>	No	<b>Resolution:</b>	not reproducible
<b>Crashes QGIS or corrupts data:</b>	No	<b>Copied to github as #:</b>	23581
<b>Description</b>			
<p>I faced with the same issue:</p> <p><a href="http://gis.stackexchange.com/questions/211117/map-tip-display-text-in-qgis-2-16-pictures-not-showing-up-anymore">http://gis.stackexchange.com/questions/211117/map-tip-display-text-in-qgis-2-16-pictures-not-showing-up-anymore</a></p> <p>Map tips are not showing images correctly; there are scrollbars instead.</p> <p>My formula:</p> <pre>&lt;h2&gt; [% "filename" %] &lt;/h2&gt; &lt;br&gt; &lt;img src="[% "filepath" %]" width="400" /&gt;</pre> <p>Before (2.10.x) I saw the filename and the photo below correctly.</p>			
<b>Related issues:</b>			
Duplicated by QGIS Application - Bug report # 16401: Maptips with images stop...		Closed	2017-03-31
Duplicates QGIS Application - Bug report # 12141: Map Tips HTML: images added...		Closed	2015-02-06

History

#1 - 2016-10-04 01:42 AM - Adam Szieberth

Enclosing content in divs worked as I posted in my answer on SE:

```
<div style="width:400px;height:320px">
<div style="height:20px; margin: 0 auto;">
[% "filename" %]
</div>
<div style="height:300px; margin: 0 auto;">

</div>
</div>
```

However, I believe many have formatted they map tip html according to this answer (as did I):

<http://gis.stackexchange.com/a/160131/44921>

This issue is related to the plain and common practice mentioned by this SE answer.

**#2 - 2017-04-30 09:59 AM - Alexander Bruy**

- Duplicated by Bug report #16401: Maptips with images stopped to work in 2.18 added

**#3 - 2017-04-30 10:00 AM - Alexander Bruy**

- OS version deleted (XP)
- Description updated
- Priority changed from Normal to Severe/Regression
- Operating System deleted (Windows)

Raising priority as this is regression.

**#4 - 2017-04-30 10:31 AM - Giovanni Manghi**

- Affected QGIS version changed from 2.16.3 to 2.18.4
- Target version set to Version 2.18

**#5 - 2017-04-30 05:08 PM - Giovanni Manghi**

- Regression? set to Yes

**#6 - 2017-04-30 05:08 PM - Giovanni Manghi**

- Priority changed from Severe/Regression to High

**#7 - 2017-05-01 01:10 AM - Giovanni Manghi**

- Easy fix? set to No

**#8 - 2017-05-12 04:11 PM - Giovanni Manghi**

- Status changed from Open to Closed
- Resolution set to not reproducible

work as expected on 2.18.7

**#9 - 2017-06-09 11:56 AM - Giovanni Manghi**

- Affected QGIS version changed from 2.18.4 to 2.18.9
- Status changed from Closed to Open
- Resolution deleted (not reproducible)

seems with local image is still broken and in 2.14 was ok.

**#10 - 2017-06-09 12:38 PM - Alexander Bruy**

- Status changed from Open to Closed

Seems now you need to specify image size and follow strict HTML rules, then it works.

**#11 - 2017-07-19 01:24 PM - Pavel Diptan**

- File Map\_Tips\_empty\_dialog.png added

- File *Attribute\_table.png* added
- File *identify\_features\_code.png* added
- File *identify\_features\_working.png* added
- File *Map\_Tips\_code.png* added

Alexander Bruy wrote:

| *Seems now you need to specify image size and follow strict HTML rules, then it works.*

Can you provide an example of working HTML code? The one specified by Adam Szieberth doesn't work.

The HTML code that used to work for me pre 2.14.x:

```
[%CONCAT('</img>')%]
```

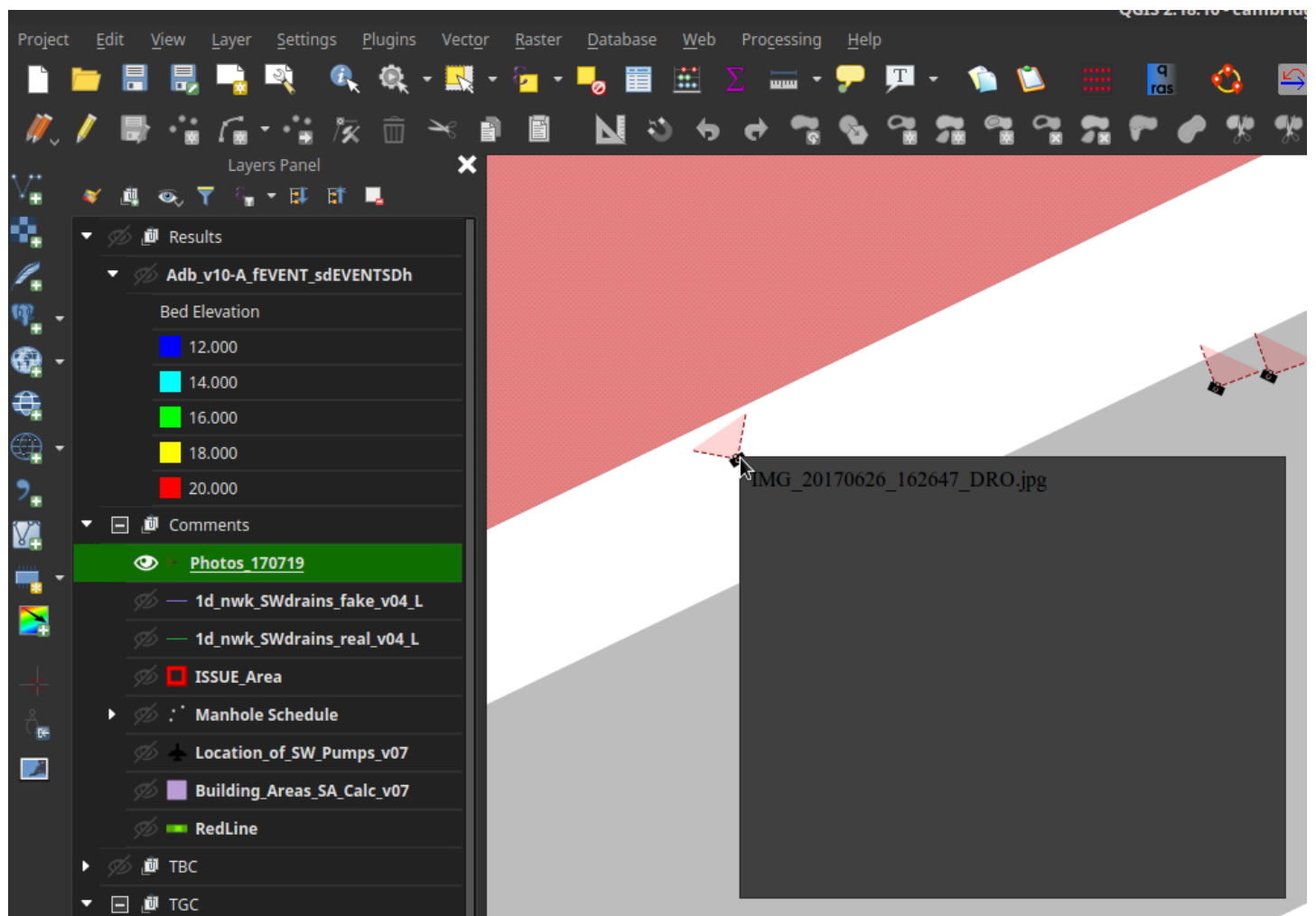
The new HTML code as recommended above doesn't work for me:

```
<div style="width:400px;height:320px">
<div style="height:20px; margin: 0 auto;">
[% "filename" %]
</div>
<div style="height:300px; margin: 0 auto;">

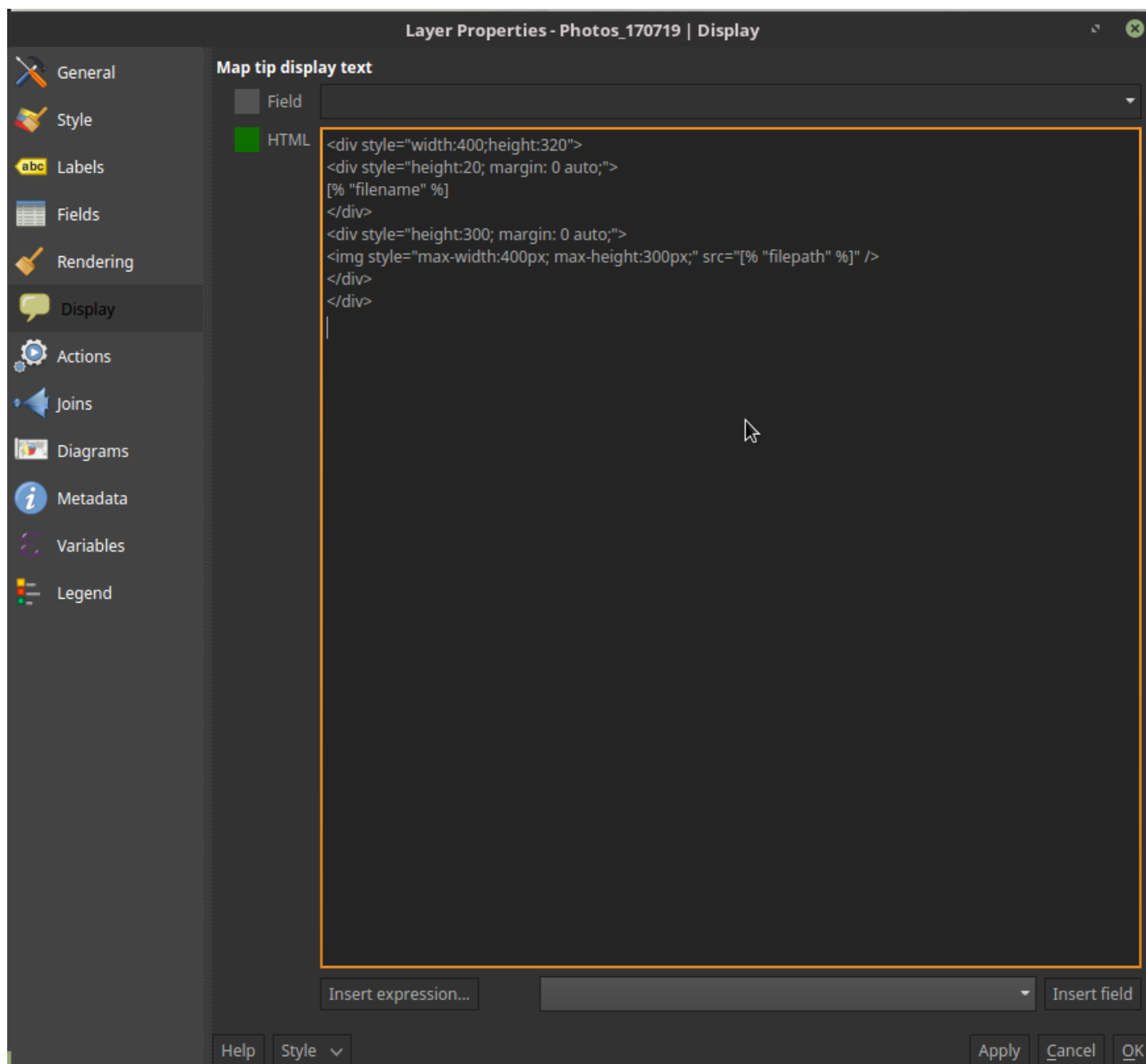
</div>
</div>
```

Below are a bunch of images trying to explain my problem as clearly as possible and my system information. Does anyone know why Map tips don't work (they are not working on a whole bunch of Linux machines, unable to test on Windows). Is there an error in the code I am using?

When using map tips, the filename of the image comes up, but the image itself is blank:



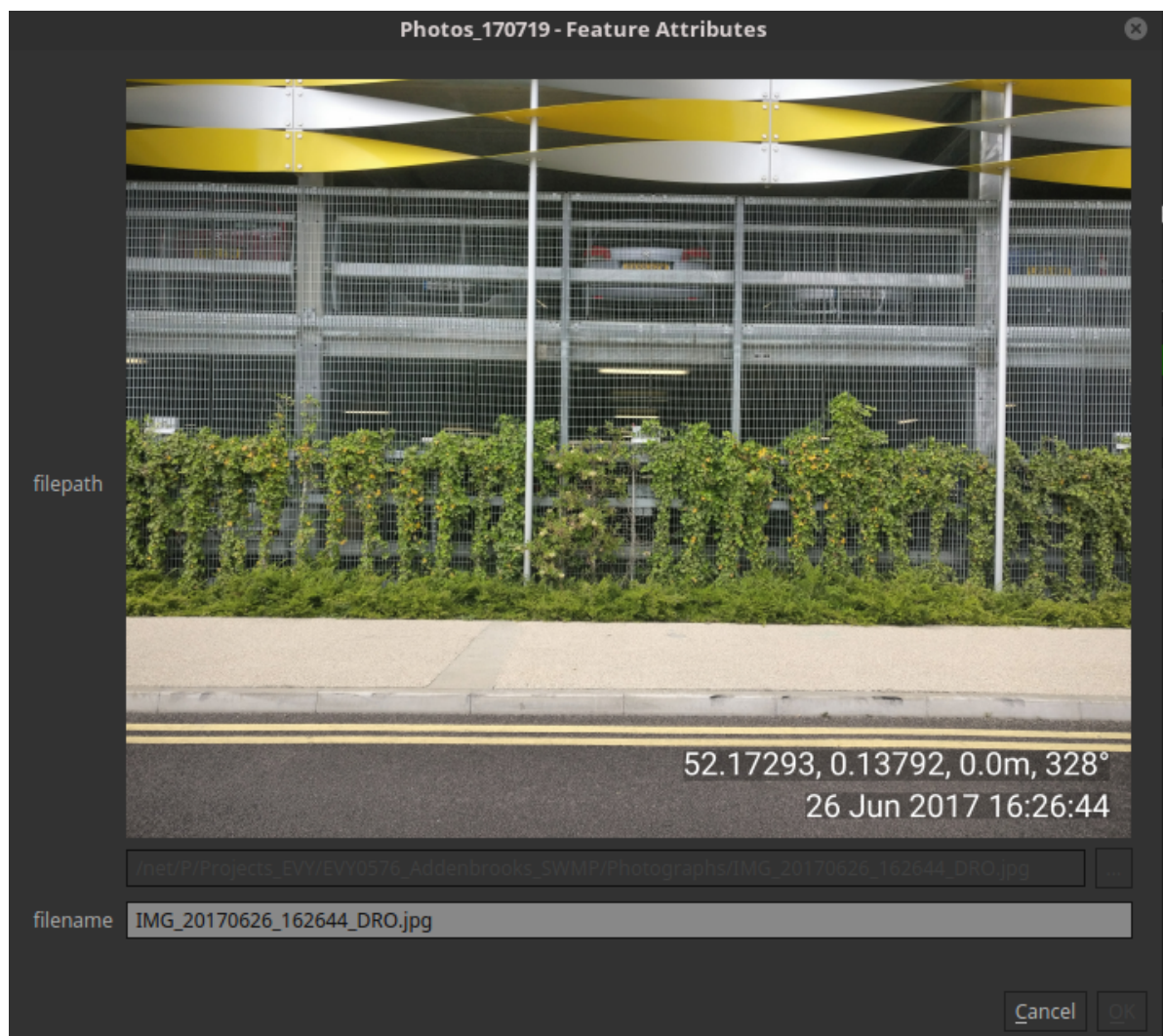
The HTML code is as specified above:



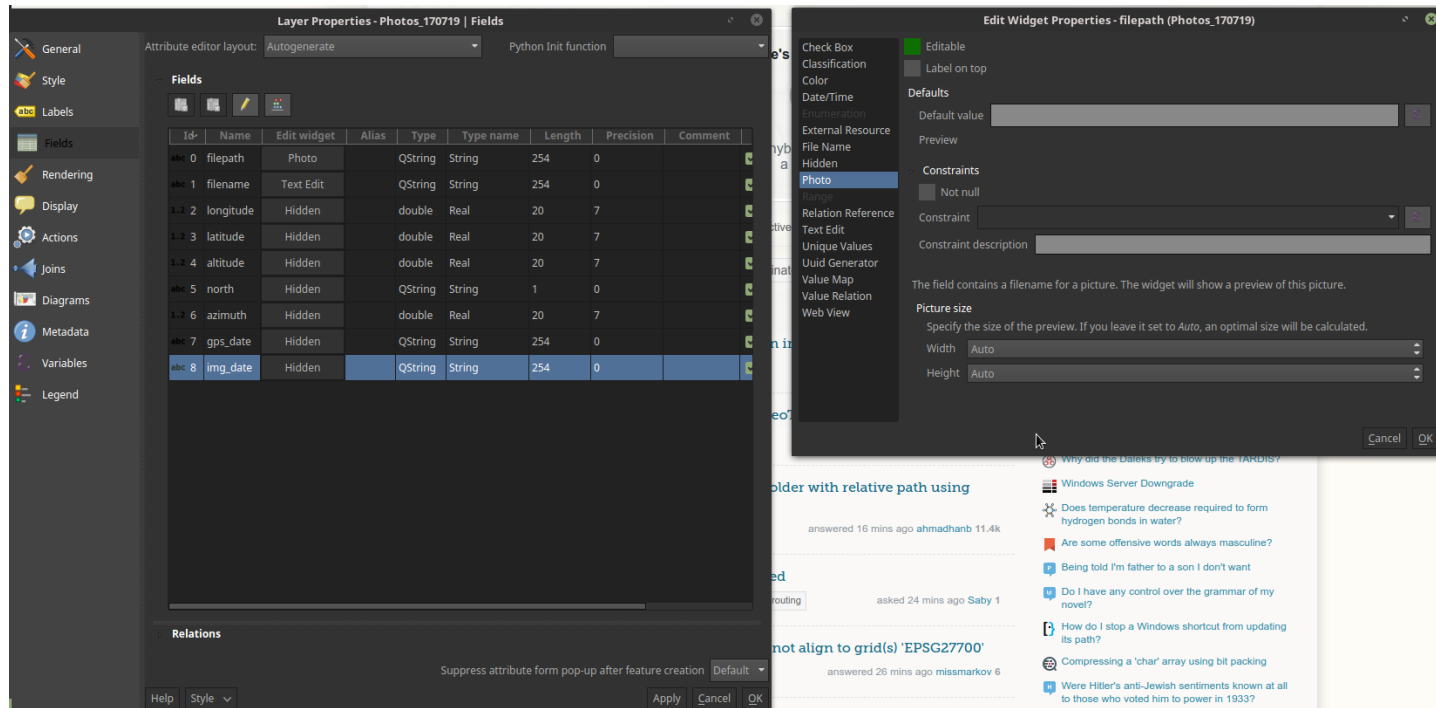
The attribute table showing filepath:

	filepath	filename	longitude	
1	/net/P/Projects_EVY/EVY0576_Addenbrooks_SWMP/Photographs/IMG_20170626_140534_DRO.jpg	IMG_20170626_140534_DRO.jpg	0.1366608	!
2	/net/P/Projects_EVY/EVY0576_Addenbrooks_SWMP/Photographs/IMG_20170626_162647_DRO.jpg	IMG_20170626_162647_DRO.jpg	0.1376127	!
3	/net/P/Projects_EVY/EVY0576_Addenbrooks_SWMP/Photographs/IMG_20170626_140453_DRO.jpg	IMG_20170626_140453_DRO.jpg	0.1371384	!
4	/net/P/Projects_EVY/EVY0576_Addenbrooks_SWMP/Photographs/IMG_20170626_135410_DRO.jpg	IMG_20170626_135410_DRO.jpg	0.1408689	!
5	/net/P/Projects_EVY/EVY0576_Addenbrooks_SWMP/Photographs/IMG_20170626_140518_DRO.jpg	IMG_20170626_140518_DRO.jpg	0.1368496	!
6	/net/P/Projects_EVY/EVY0576_Addenbrooks_SWMP/Photographs/IMG_20170626_140920_DRO.jpg	IMG_20170626_140920_DRO.jpg	0.1382832	!
7	/net/P/Projects_EVY/EVY0576_Addenbrooks_SWMP/Photographs/IMG_20170626_140502_DRO.jpg	IMG_20170626_140502_DRO.jpg	0.1371008	!

The weird thing is that identify features works:



When filepath is set to be 'Photo':



My system:

Kernel: 4.4.0-83-generic x86\_64 (64 bit)  
Desktop: MATE 1.14.1 Distro: Linux Mint 18 Sarah  
QGIS version 2.18.10  
QGIS code revision 59e0f78  
Compiled against Qt 4.8.7  
Running against Qt 4.8.7  
Compiled against GDAL/OGR 1.11.3  
Running against GDAL/OGR 1.11.3  
Compiled against GEOS 3.5.0-CAPI-1.9.0  
Running against GEOS 3.5.1-CAPI-1.9.1 r4246  
PostgreSQL Client Version 9.5.2  
Spatialite Version 4.3.0a  
QWT Version 5.2.3  
PROJ.4 Version 492  
QScintilla2 Version 2.9.1

**#12 - 2017-07-19 07:16 PM - Giovanni Manghi**

- Affected QGIS version changed from 2.18.9 to 2.18.10
- Subject changed from *map tips does not show images correctly anymore* to *map tips does not show images correctly anymore... on Linux*
- Status changed from *Closed* to *Open*
- Operating System set to *Ubuntu 16.04 (possibly others)*

The HTML code that used to work for me pre 2.14.x:

[...]

The new HTML code as recommended above doesn't work for me:

[...]

this snippets as also the one in the description... al works fine on Windows 2.14.16 or 2.18.10, they "just" don't work on Linux.

**#13 - 2017-07-25 07:44 PM - Giovanni Manghi**

- Affected QGIS version changed from 2.18.10 to 2.18.11

**#14 - 2017-10-03 01:38 PM - Alexander Bruy**

- Status changed from *Open* to *Feedback*

Works fine on all systems with strict HTML



**#15 - 2017-10-03 02:29 PM - Giovanni Manghi**

- Resolution set to *not reproducible*
- Status changed from *Feedback* to *Closed*

#16 - 2017-11-28 12:53 PM - Alexander Bruy

- Duplicates Bug report #12141: Map Tips HTML: images added with <img src> are only shown if source is a local file added

#17 - 2017-12-28 09:31 PM - Bernd Vogelgesang

Nice to finally find that this works when adding "file://" to the path.  
But still it's a regression from the state before, when a simple path like it is generated e.g. from Photo2shape-plugin does not work anymore.  
Neither intuitive nor to be expected.  
Furthermore it's not documented anywhere, and after month of not being able to get some work done which would have relied on that function, I accidentally stumbled upon this bug report.

#18 - 2018-09-09 04:29 PM - Marco Bernasocchi

The most portable way to use this (assuming you have the images in the same folder as the project) currently (tested on 3.2 - ubuntu) is:

```

```

Files			
Attribute_table.png	100 KB	2017-07-19	Pavel Diptan
identify_features_code.png	204 KB	2017-07-19	Pavel Diptan
Map_Tips_code.png	61.5 KB	2017-07-19	Pavel Diptan
Map_Tips_empty_dialog.png	104 KB	2017-07-19	Pavel Diptan
identify_features_working.png	565 KB	2017-07-19	Pavel Diptan