

QGIS Application - Bug report #12897  
Geopackage: add support in DB Manager

2015-06-06 01:15 AM - Giovanni Manghi

<b>Status:</b>	Closed		
<b>Priority:</b>	Normal		
<b>Assignee:</b>			
<b>Category:</b>	DB Manager		
<b>Affected QGIS version:</b>	master	<b>Regression?:</b>	No
<b>Operating System:</b>		<b>Easy fix?:</b>	No
<b>Pull Request or Patch supplied:</b>	No	<b>Resolution:</b>	
<b>Crashes QGIS or corrupts data:</b>	No	<b>Copied to github as #:</b>	20987
<b>Description</b>			
subject says it all.			
<b>Related issues:</b>			
Related to QGIS Application - Feature request # 12187: GeoPackage: Vector lay...		<b>Closed</b>	<b>2015-02-11</b>

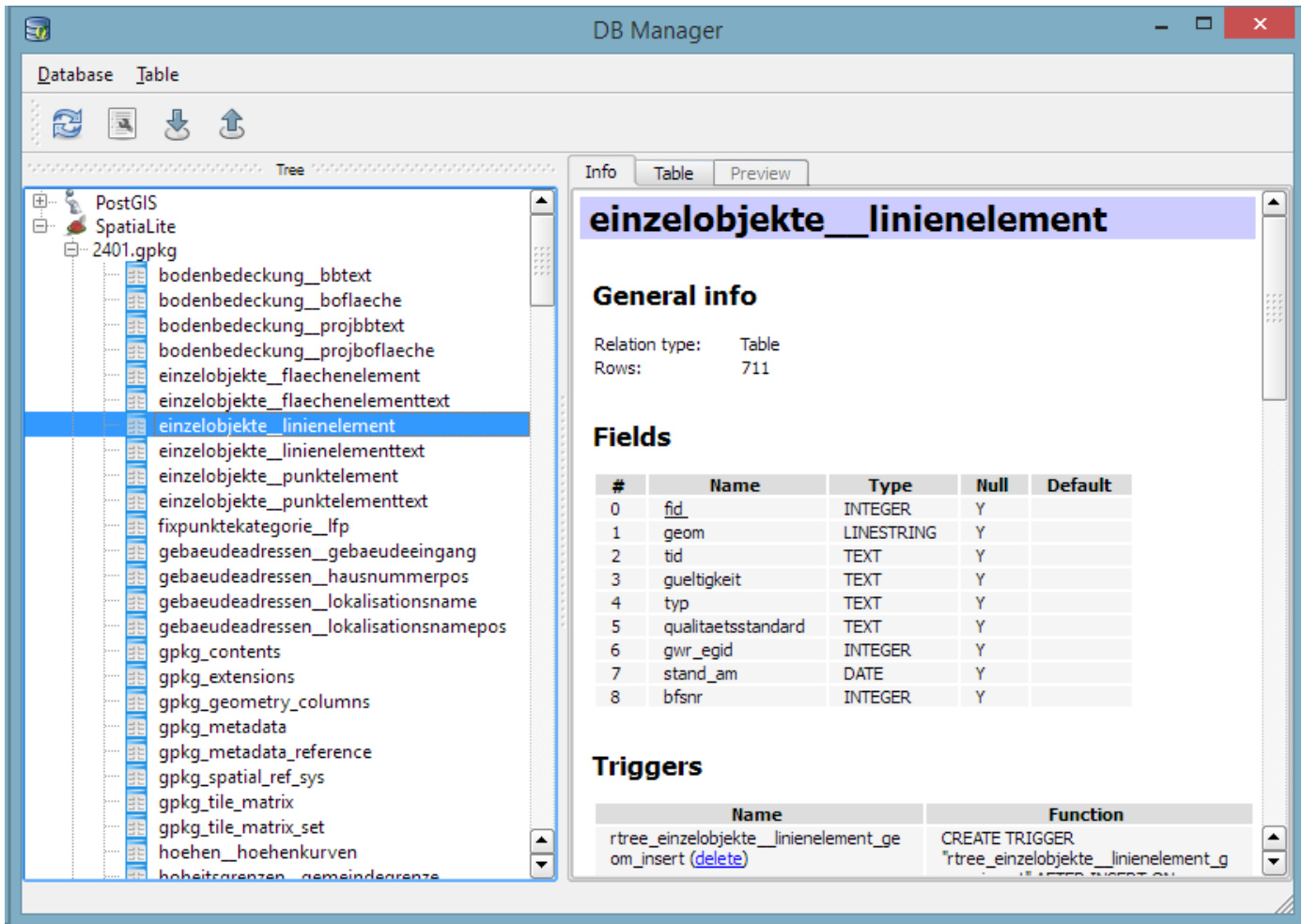
History

#1 - 2015-06-07 04:50 AM - Anita Graser

- File gpkg.png added

Geopackage content is displayed in the DB Manager but it is currently not possible to load layers from there. The displayed error is:

Layer is not valid: The layer dbname='C' is not a valid layer and can not be added to the map



#2 - 2015-06-07 04:55 AM - Sfkeller -

I'll try to take a look at this issue - without warranty - I never looked at this plugin before. Eventually it's author (Guiseppe Succameli?) may help.

#3 - 2015-07-03 01:24 AM - cedric christen

- % Done changed from 0 to 100
- Status changed from Open to Closed

Implemented in commit:8b2bbcd

## Files

File Name	Size	Date	Author
gpkg.png	60.4 KB	2015-06-07	Anita Graser