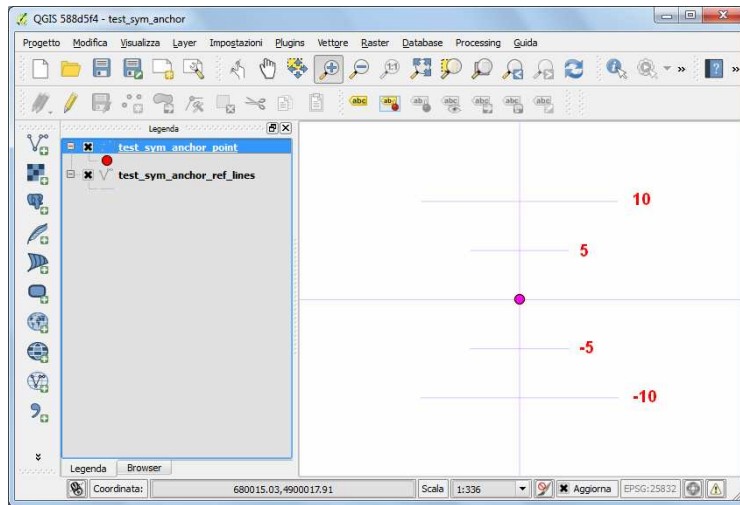
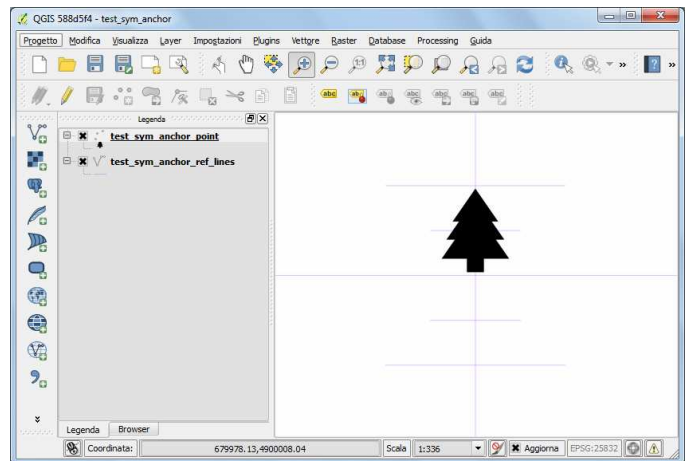
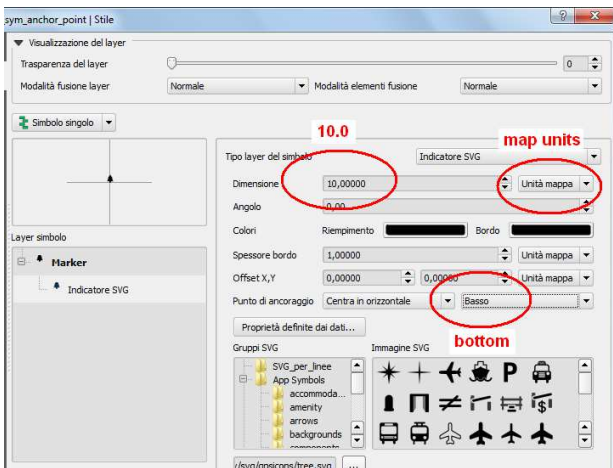


SVG symbol shift reading dimension from data properties

Test: a simple “point” shapefile with one only feature and a “linear” shapefile on the background, with reference lines at distance of 5 and 10.

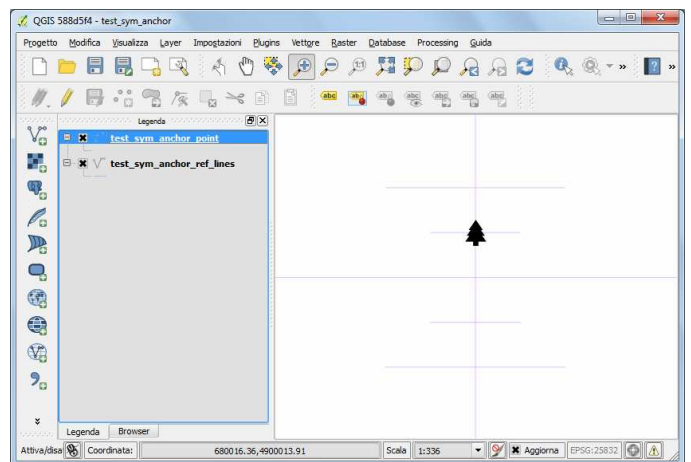
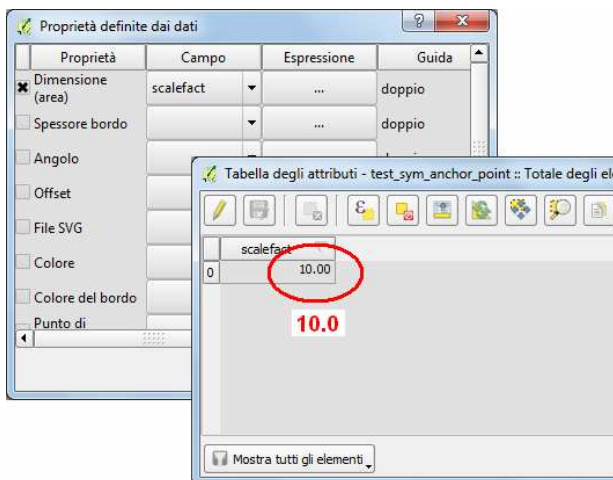


Example 1: set svg symbol, vertical anchor = ‘bottom’ and dimension = 10.0 map units (dimension value set in the style window):



=> visualization seems ok

Example 2: same anchor and same dimension, but dimension value read from data properties:



=> you can see a different size of symbol (ok the “area issue”, but why a different behaviour if you set the same dimension value in style window or in data properties?) and a “shift” of the symbol from his insertion point, like scaling origin wasn’t symbol bottom.

If you set 10.0 directly as expression instead of reading value from dbf field you obtain the same result:

