

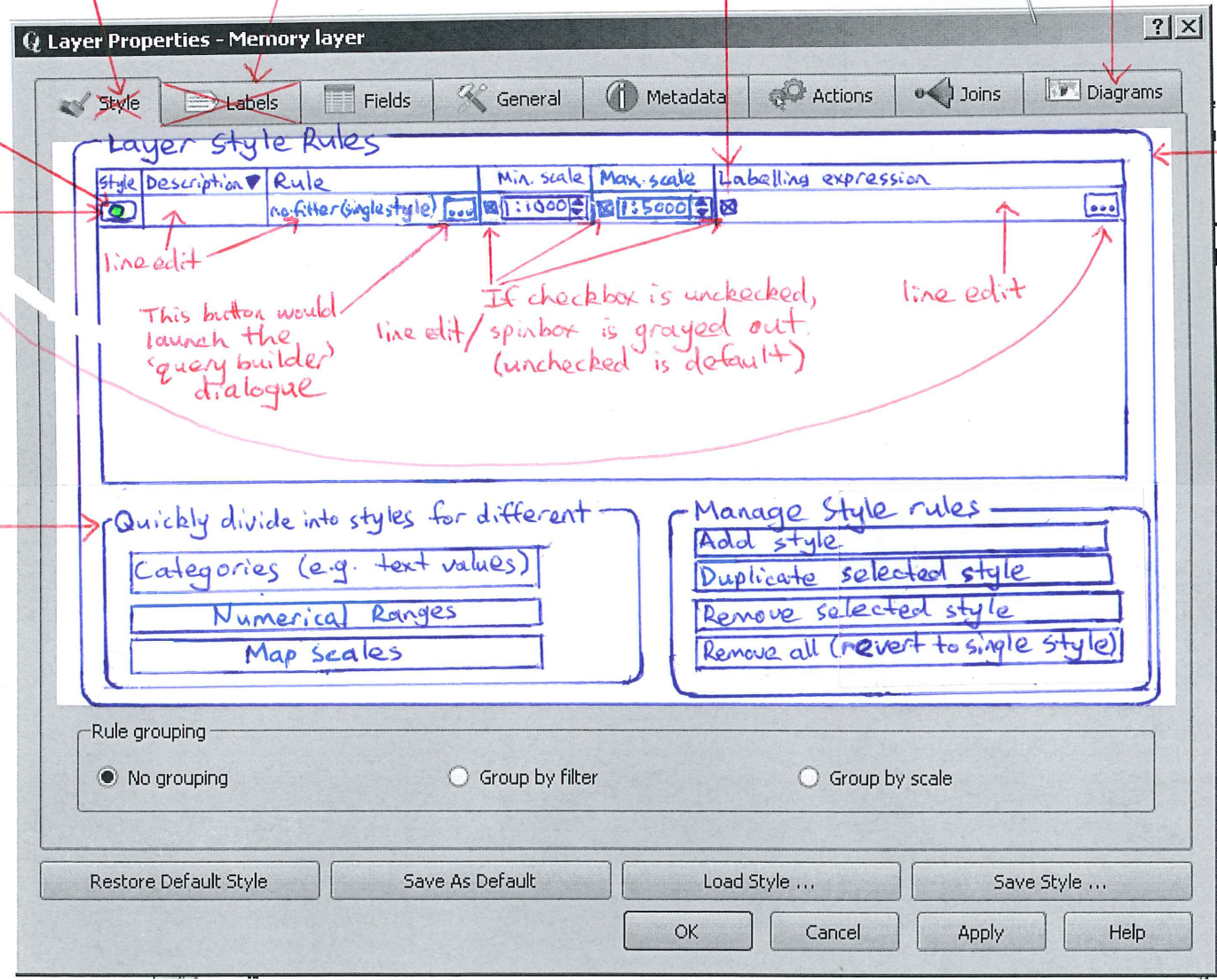
Feature #3843 would ~~need to~~ be implemented (rule based labelling).

could possibly move diagramming tab to new 'feature style' / 'label' dialogue

Possibly rename this tab

Move labelling tab to new dialogue

style shown on button



These buttons launch the 'feature style' / 'labels' dialogue

Replaces ① 'refine' button in rule-based rendering, and ② categorised and graduated renderers.

line edit

This button would launch the 'query builder' dialogue

If checkbox is unchecked, line edit/spinbox is grayed out. (unchecked is default)

line edit

This groupbox might not be necessary

Quickly divide into styles for different

- Categories (e.g. text values)
- Numerical Ranges
- Map Scales

Manage Style rules

- Add style
- Duplicate selected style
- Remove selected style
- Remove all (revert to single style)

Rule grouping

- No grouping
- Group by filter
- Group by scale

Restore Default Style Save As Default Load Style ... Save Style ...

OK Cancel Apply Help

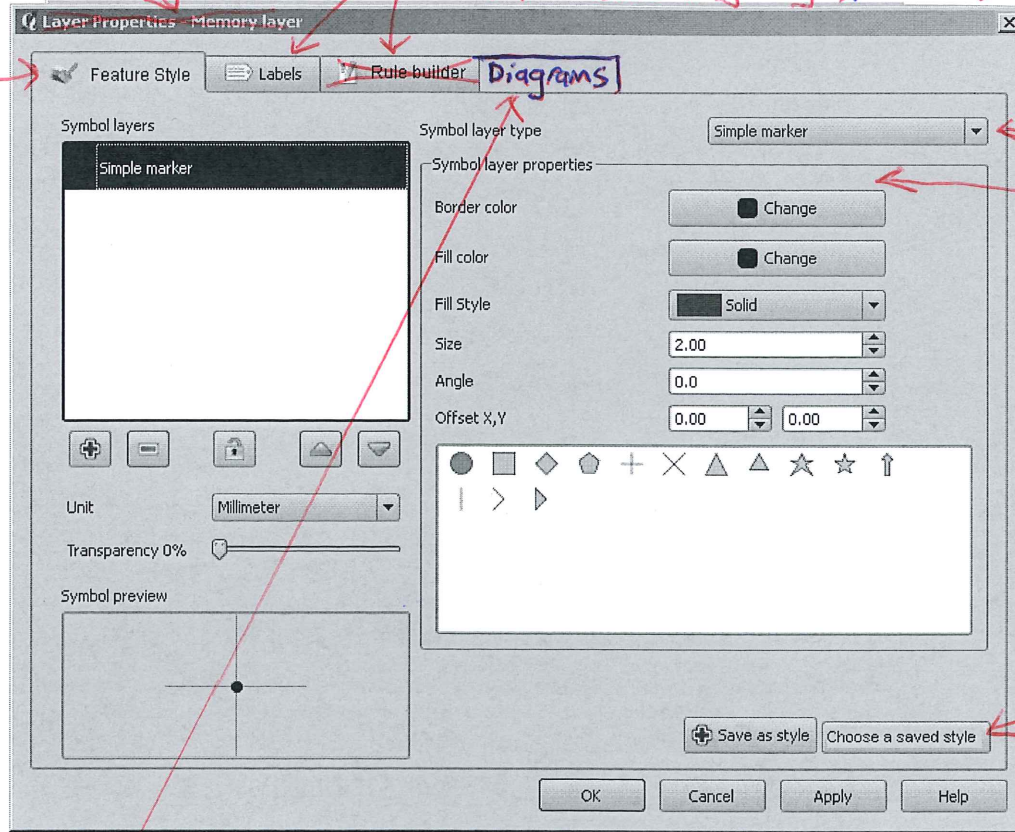
I'm not sure what the window should be named perhaps "Style - [rule description]"

The 'feature style' tab (could be 'symbol style' or 'object style' instead) would replace

the 'symbol properties' dialogues, the bottom half of the 'rule properties' dialogue (from rule-based rendering), the 'symbol selector' dialogues (from categorised and graduated rendering), and the content of the 'style tab' from 'single symbol' rendering.

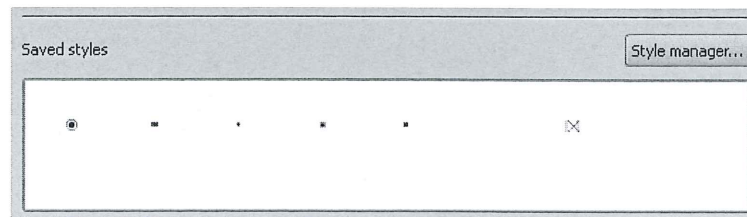
ie. one dialogue for 'symbol style' instead of four.

The 'labels' in the layer properties dialogue, and the separate dialogue for labelling-ng. The query builder could optionally be embedded in the 'rule builder' tab, but I think it would be simpler to keep it separate.



Should this be moved into here?

This would open the style manager, which would need an 'apply' or 'OK' button added to it.



This could be included at the bottom of the dialogue, but maybe people with small screens would prefer it was not.

Could move diagramming to this dialogue if it is implemented by rule instead of for the whole layer.